

# Zipsignals Client Expert Advisor Documentation

## Overview

This document details the ***Zipsignals Client Expert Advisor (EA)*** installation, settings and configurations. Please read this document in its entirety.

The ***Zipsignals Client EA*** will auto-execute trading signals when used in conjunction with subscribing to a trading system on Zipsignals.com. The EA uses the settings you provide, such as Subscription ID, to check for signals initiated for your subscription. The EA will check based on your Signal Check Interval setting. Once a signal is found, the order will try to execute in your account. The signal types are New, Modify, Close Partial and Close Complete. If a retryable error is encountered the EA will queue the signal and attempt execution until queued signal expiration (default 72 hours) or signal success.

The EA determines lot size by using your account information and/or settings you specify. Each order will have a "Size" value that represents percentage of account balance (from 0.1% -10.0%) that is used to weigh the order. i.e. 2.0% Size order will open 0.20 lot with an account balance of \$10,000 and margin of 1:100 on a standard account.

When configured and run properly, the EA will allow auto-execution of signals generated from Zipsignals.com.

## Usage Notes

**Important!** Attach this EA to only **ONE** chart. You will receive signals for **ALL** currency pairs. You **DO NOT** need to attach the EA to each currency pair chart. Running more than one copy of the EA in the same MetaTrader Terminal (MT4) and using the same Subscription ID will cause inconsistent order execution.

**Important!** **DO NOT** change timeframes (M1, M5, M15, etc.) on the chart that the EA is attached. Doing so will cause the EA to stop checking for signals, and no signals will be executed. If you accidentally changed timeframes on the chart, you can restart your MT4 Terminal to correct this.

**Important!** You will not be able to receive signals for multiple accounts with the same Subscription ID. The signal can only be received by one account. Other instances of the EA running the same Subscription ID will not receive the signal.

**Important!** Your MT4 Terminal must be running and connected to the internet to receive signals. The best method is to run your MT4 terminal from a ***Virtual Private Server (VPS)***. A quality VPS is a vital tool for auto-trading the Forex market. We

recommend ForexVPS for their reliability and features. They cater to the Forex auto-trading market.

**Click here for current ForexVPS pricing:** [http://www.forexvps.com/?a\\_aid=ce48c057](http://www.forexvps.com/?a_aid=ce48c057)

Alternatively, VPSLAND offers a budget Windows Server VPS from \$18 per month. We have used VPSLAND for over 2 years now with no detectable down time.

**Click here for VPSLand pricing:** [http://www.vpsland.com/?a\\_aid=4c33ca8b7c0b1](http://www.vpsland.com/?a_aid=4c33ca8b7c0b1)

**Important!** Once the EA is attached to a chart you must **press and hold down the F7 Key** to view properties (settings). You might need to hold down the key for a few seconds before you see the “properties” window. You **WILL NOT** see the properties window by right clicking the chart the EA is attached to and selecting “Expert Advisors” then “Properties...” from the drop down menu.

**Important!** Some currency pairs are “hidden” in the “Market Watch” window of your MT4 Terminal. If you wish to execute signals for all available currency pairs, right click inside the “Market Watch” window and select “Show All” from the pop-up menu. If you wish to restrict the currency pairs that are traded, some brokers allow you to “Hide” the symbols in the “Market Watch” window inside MT4. Hiding a currency pair will make that pair invisible to the EA so no trades will be executed for that pair. To hide a currency pair right-click on the symbol in the “Market Watch” window and select “Hide” from the pop-up menu.

You may run multiple instances of the EA as long as each instance is for a separate subscription using a different Subscription ID.

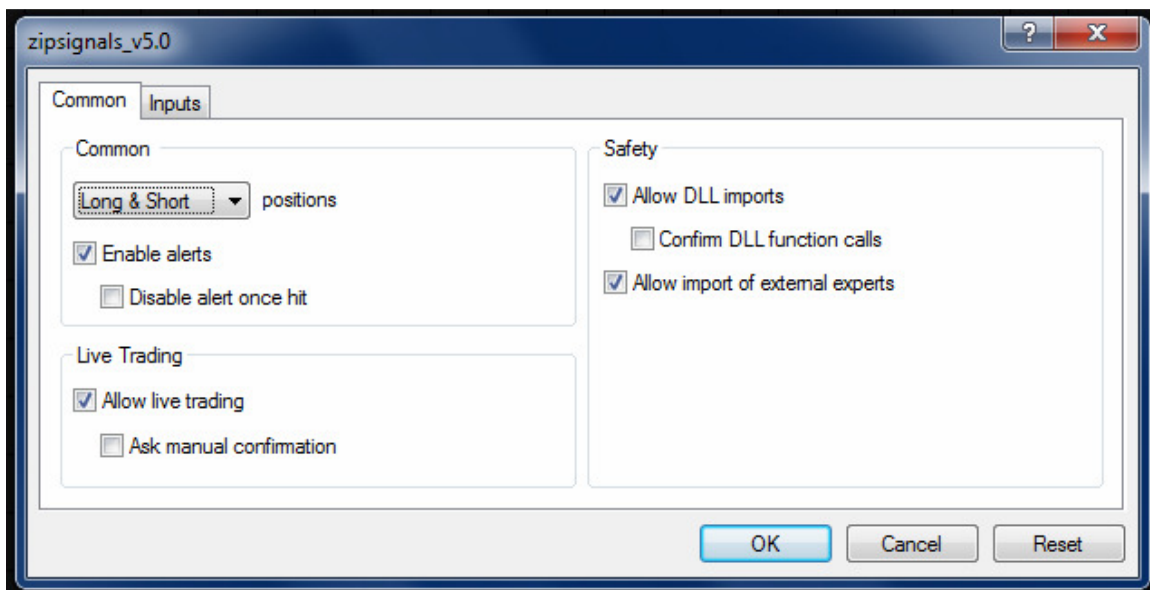
Closing your MT4 Terminal and restarting it will not affect the EA, and all existing trades will maintain their identity in case a modify or close signal is initiated.

Please be aware of the US NFA ruling to disallow hedging titled Compliance Rule 2-43. If you have a US brokerage account you could experience some signals not executing. This will happen if your subscription issues both long and short trades for the same currency pair at the same time.

## Installation

1. Close your MT4 Terminal.
2. Double-click the ZipsignalsClientInstaller.exe file. Alternatively, you can copy the ZIPSIGNALS\_v5.0.ex4 file to your experts folder of the MT4 Instance you wish to run the EA. If you don't know where your MT4 install folder is, it will usually be installed under “C:\Program Files”. If you install with the .exe file you do NOT need to copy the .ex4 file, it will be copied for you.
3. If you install from the .exe file, follow the on screen directions to install the EA to the MT4 Terminal instances of your choosing.
4. Open your MT4 Terminal.

5. Inside the “Navigator” box expand the “Expert Advisors” Node by clicking the “+” (plus) image if necessary to see ZIPSIGNALS\_v5.0.ex4 listed. If you do not see the “Navigator” box click “View” then “Navigator” on the menu bar.
6. Select an existing chart or open a new one by clicking the “New Chart” dropdown (green plus sign) near the top left. It does not matter which currency pair the chart is attached to. The EA will open trades for all currency pairs regardless of the chart chosen.
7. Double-click or drag and drop the Zipsignals\_v5.0.ex4 EA to your chart. DO NOT attach the EA to more than one chart.
8. A box should popup with 2 tabs: “Common” and “Inputs”.
9. On the “Common” tab ensure:
  - a. “Long & Short” is selected in the “positions” drop down
  - b. “Allow Live Trading” check box is checked
  - c. “Ask manual confirmation” is NOT checked
  - d. “Allow DLL Imports” is checked
  - e. “Confirm DLL function calls” is NOT checked



10. On the “Inputs” tab select your configuration settings as described in the section “Configuration Settings” below inside this document.
11. Once your settings are complete click the “Save” button to save your configuration settings and select a location for your “set” file. Once the EA is attached to the chart you must press and hold down the F7 Key to see the properties window again.
12. Click “OK”.
13. You should see a smiley face in the upper right of the chart. This means the EA is running and installed correctly. It does not, however, tell you that it is configured properly. You would have to send a test signal to ensure you are configured correctly.
14. To send a test signal to the EA:
  - a. Login at <https://www.zipsignals.com/secure/IdentityManager/login.cfm>.
  - b. Once you are on the “My Account” page click the “Subscriber” tab

- c. Click the subscription record in the “Active Subscriptions” section to highlight it bright green
  - d. Click “Send Test Signal” button near the bottom right.
  - e. Click “Yes” to send the test signal.
15. Look inside your MT4 Terminal for a new EURUSD Buy order (test signal). Be sure to manually close the trade. If no order is executed click the “Experts” tab of your MT4 Terminal to see the logs any error messages returned. For more help in troubleshooting please see the Frequently Asked Questions (FAQ) Page of Zipsignals.com located at <http://www.zipsignals.com/faq.cfm>.

## Configuration Settings

**Subscription\_ID** – Enter your Subscription ID that is generated when you subscribe to a system on Zipsignals.com. It is labeled EA ID in the subscription record located on the “Subscriber” Tab after logging into Zipsignals.com.

**FixedBalance** – If set to “true”, EA will use the value in “UseBalance” to calculate lot size. When false, EA will ignore the “UseBalance” value and determine lot size based on your actual account balance. Value is ignored if “FixedLotSize” is “true”.

**UseBalance** – Value is used to determine lot size when “FixedBalance” is “true”. Value is ignored if “FixedLotSize” is “true”.

**FixedMargin** – If set to “true”, EA will use the value in “UseMargin” to calculate lot size. When false, EA will ignore the “UseMargin” value and determine lot size based on your actual account margin. It is recommended to use a fixed margin as some brokers have floating or variable margin values that will lead to inconsistent lot size calculations. Value is ignored if “FixedLotSize” is “true”.

**UseMargin** – Value is used to determine lot size when “FixedMargin” is “true”. Value of 100 uses 1:100 margin, 50 uses 1:50, 200 uses 1:200, etc. Value is ignored if “FixedLotSize” is “true”.

**AccountIsMini** – Set to “true” if you have a “Mini” account. Mini accounts will display 1 lot size as 10 and 0.1 lot as 1.0. Value is ignored if “FixedLotSize” is “true”.

**FixedLotSize** – If set to “true”, EA will use the value in “UseLotSize” when opening trades. When false, EA will ignore the “UseLotSize” value.

**UseLotSize** – Value is used to determine lot size when “FixedLotSize” is “true”.

**OrderSlippage** – Max slippage on order once initiated for execution.

**MaxDeviation** – Number of pips the order can be away from open price in signal. EA will always enter order if price is better.

**SymbolSuffix** – Use if your broker uses a character after the symbol i.e. EURUSDm, or EURUSD.. (two periods at the end)

**Broker5Digits** – Set to “true” if your broker uses 5 digits after the decimal i.e. 1.34567 or 95.123. Set to “false” if your broker uses 4 digits after the decimal i.e. 1.3456 or 98.12

**OrderDelayMilliseconds** – Number of milliseconds between signal executions. This setting is for some brokers that set a max number of transactions in a given time period. Value of 1000 = 1 second delay.

**SignalCheckInterval** – Number of seconds between checks for new signals. Minimum value is 5.

**EnableLogging** – Enables logging if “true”.

**PersistentQueue** – If “true” stores your queue information in a file on your computer. This will ensure if your computer or MT4 restarts your queued signals will not be erased. If you get a permission error when installing or running the EA, set this to ‘false’.

**SignalExpirationHours** – Number of hours queued signals will be retried before expiring.

**IBAccount** – Set to “true” if account is a Zipsignals IB account.

## Configuration Scenarios

FixedBalance = false, FixedMargin = true, UseMargin = 100, AccountIsMini = false with \$11,024.54 account balance:

- Order size of 1.0% issues order of 0.11 lots
- Order size of 2.0% issues order of 0.22 lots
- Order size of 5.0% issues order of 0.55 lots

FixedBalance = true, UseBalance = 5000, FixedMargin = true, UseMargin = 100, AccountIsMini = false:

- Order size of 1.0% issues order of 0.05 lots
- Order size of 2.0% issues order of 0.10 lots
- Order size of 5.0% issues order of 0.25 lots

FixedBalance = true, UseBalance = 5000, FixedMargin = true, UseMargin = 100, AccountIsMini = true:

- Order size of 1.0% issues order of 0.50 lots
- Order size of 2.0% issues order of 1.00 lots

- Order size of 5.0% issues order of 2.50 lots

FixedBalance = true, UseBalance = 100000, FixedMargin = true, UseMargin = 50, AccountIsMini = false:

- Order size of 1.0% issues order of 0.50 lots
- Order size of 2.0% issues order of 1.00 lots
- Order size of 5.0% issues order of 2.50 lots

FixedLotSize = true, UseLotSize of 0.20:

- Order size of 1.0% issues order of 0.20 lots
- Order size of 2.0% issues order of 0.20 lots
- Order size of 5.0% issues order of 0.20 lots

## **Additional Notes**

For further clarification ask us a question via the "Contact Us" link located here:

<http://www.zipsignals.com/contactus.cfm>